

Installing CAN-8 as a Service

These instructions apply to the following OS:
Windows server 2008 & 2008 R2, Windows server 2012 & 2012 R2,
Windows 2016 and windows 2019.

Before you start:

The following instructions assume that the CAN-8 server application is operating in its default installation folder C:\SVSYS and is fully functional and tested. If this is not the case please modify these instructions accordingly.

To install CAN-8 as a service, the following files will be required:

- [SRVANY.EXE](#)
- [INSTSRV.EXE](#)

For your convenience, we bundled them in the “FILES” folder included in this distribution package:

1. Create a folder in the **C:\windows** folder and call it “TOOLS” (i.e. **C:\WINDOWS\TOOLS**)
2. Copy both these files to it.

STEP 1: Create the service.

1. Right click on the command prompt icon and select “***Run As Administrator***”.
2. change to the directory **C:\windows\tools**
3. Type the following line to create the CAN8srv Service:
instsrv CAN8srv c:\windows\tools\srvany.exe



```
Administrator: C:\Windows\system32\cmd.exe

C:\Windows>cd tools
C:\Windows\tools>instsrv CAN8srv C:\windows\tools\svany.exe
The service was successfully added!

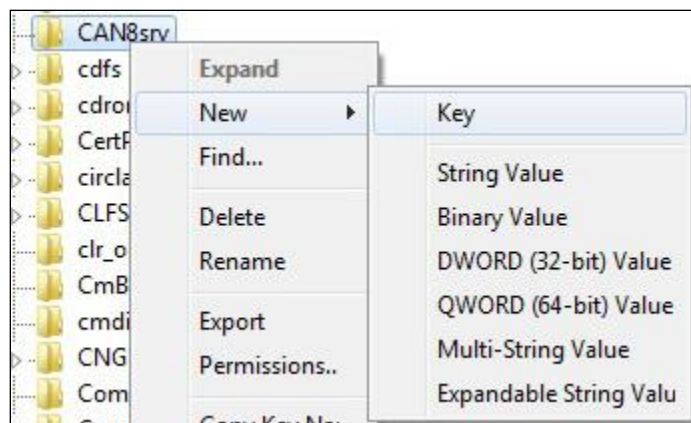
Make sure that you go into the Control Panel and the
Services applet to change the Account Name and
Password that this newly installed service will use
for its Security Context.

C:\Windows\tools>
```

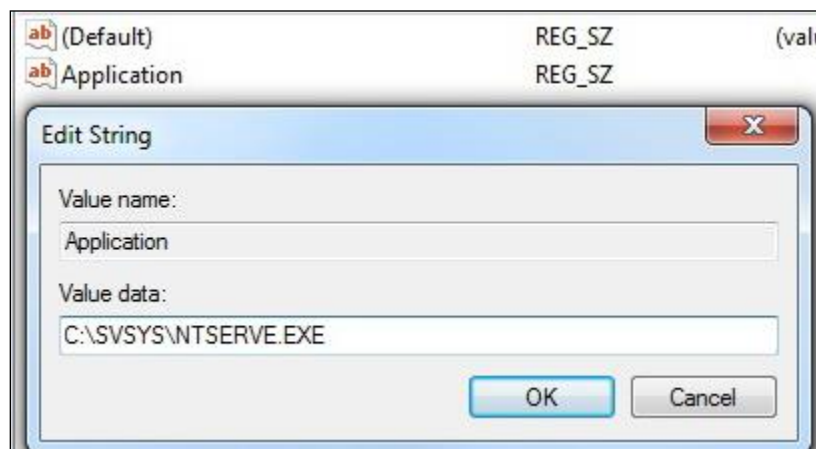
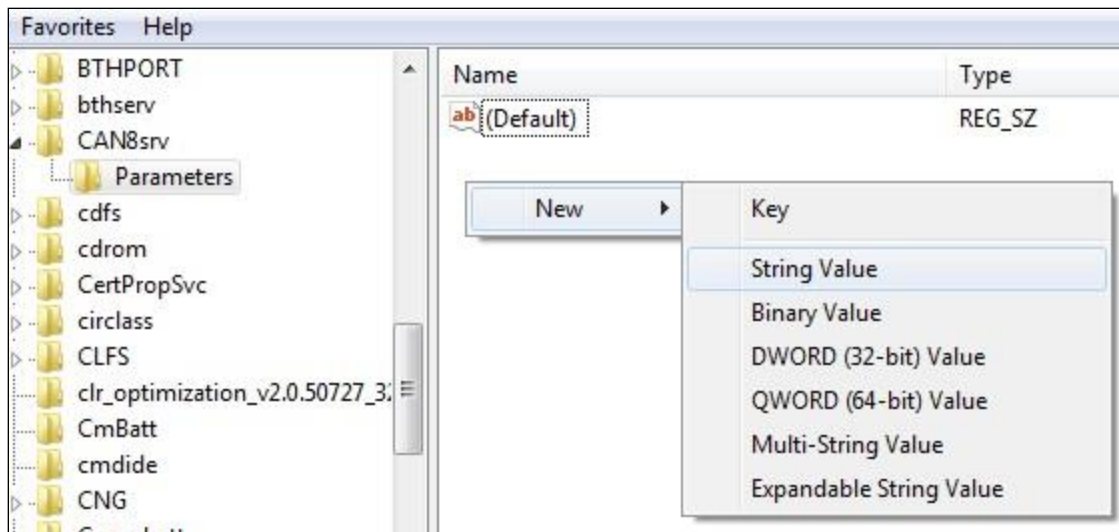
4. Once Windows NT has reported that the service has been successfully created the parameters will need to be modified.

STEP 2 – Modify the parameters:

1. Exit the command prompt and then open the Registry Editor
START->RUN->REGEDIT.EXE
2. Navigate to
KEY_LOCAL_MACHINE\SYSTEM\CurrentControlSet\Services\CAN8srv
3. create a '**Parameters**' key

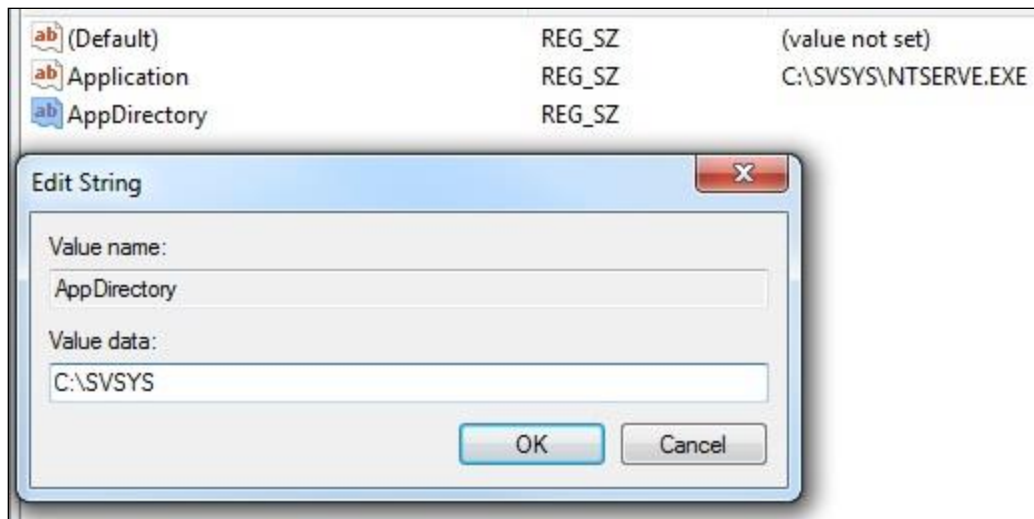


4. In the 'Parameters' key, create a string value named “**Application**” of type REG_SZ and specify there the full path to the CAN-8 server executable (including the extension).
For example: C:\SVSYS\NTSERVE.exe



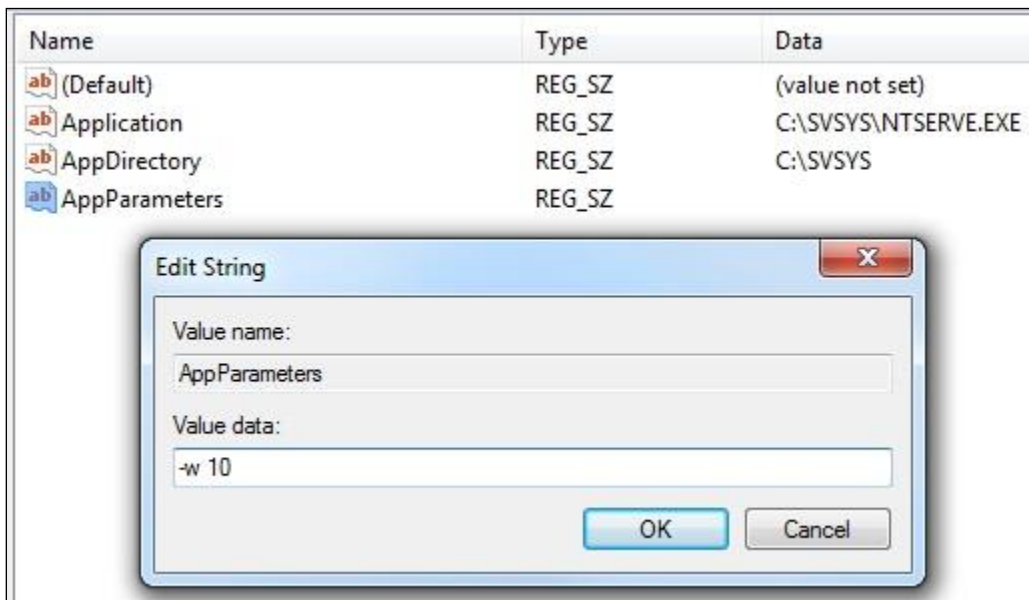
5. In the 'Parameters' key, create a string value named “AppDirectory” of type REG_SZ and specify the path to your application directory.

For Example: C:\Svsys



- Because Microsoft delays the start of certain driver processes on their Windows server products at startup, the drivers for the serial port may not be completely initialized by the time the service control manager starts the CAN-8 service. If such is the case, the CAN-8 application will be unable to communicate with the authorization device and the service will fail.

To prevent this, create an '**AppParameters**' string value of type REG_SZ and add the following string: *-w 10*

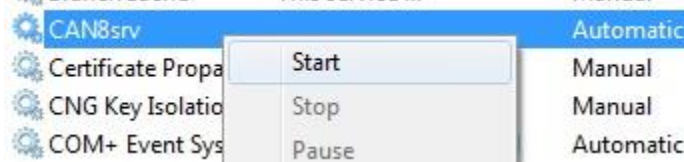


This will force the NTSERVE program to wait 10 seconds prior to attempting communication with any other device on the server.

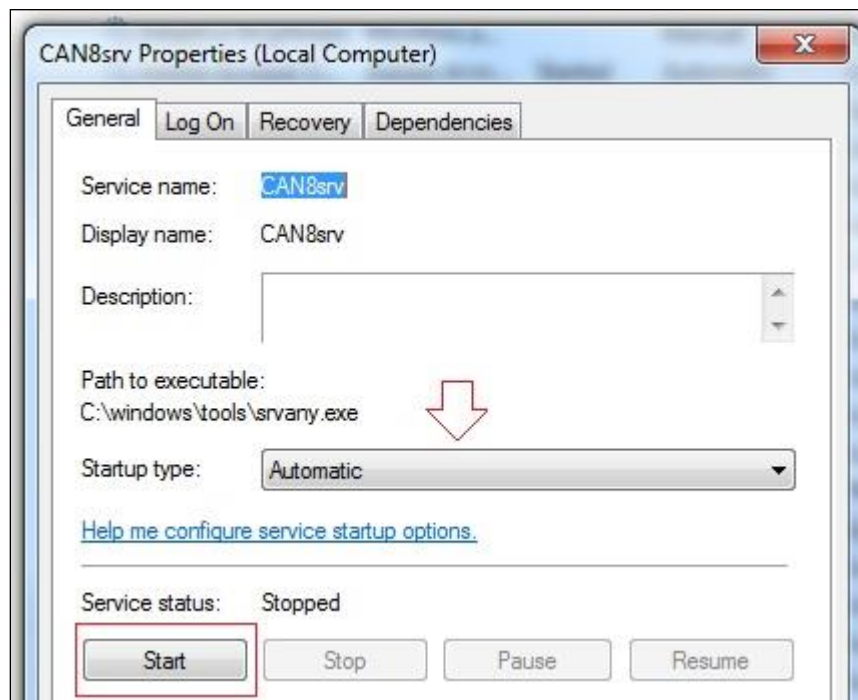
Once the parameters have been successfully modified the service must be started.

STEP 3 – Starting the CAN-8 service:

1. Open the service console
2. Control Panel -> Administrative Tools -> Services
3. Select CAN8srv in the list of services.
4. Right click and select start.



5. If the service is not set to “automatic”, right click on the service name, and then select properties,
6. You can change the startup type as illustrated below.



This concludes this procedure. If you have any question regarding this procedure or need assistance at any point during the installation, please contact us at support@can8.com